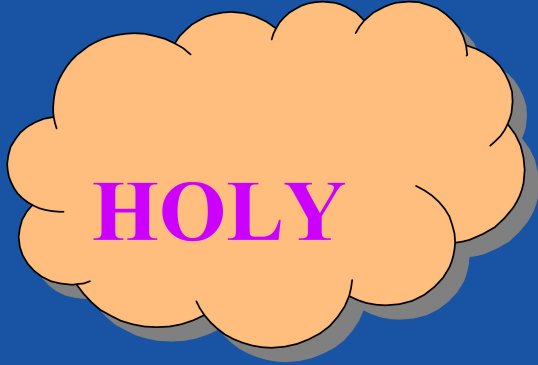
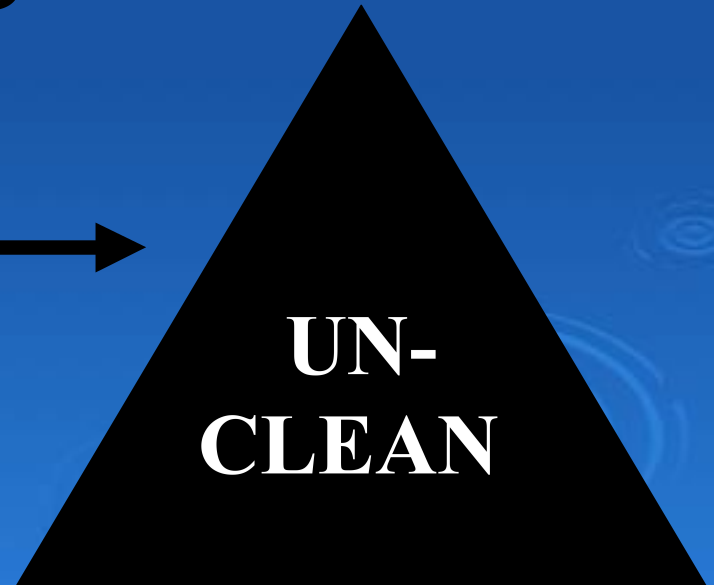


RARE SET-APART HIGHEST VALUE

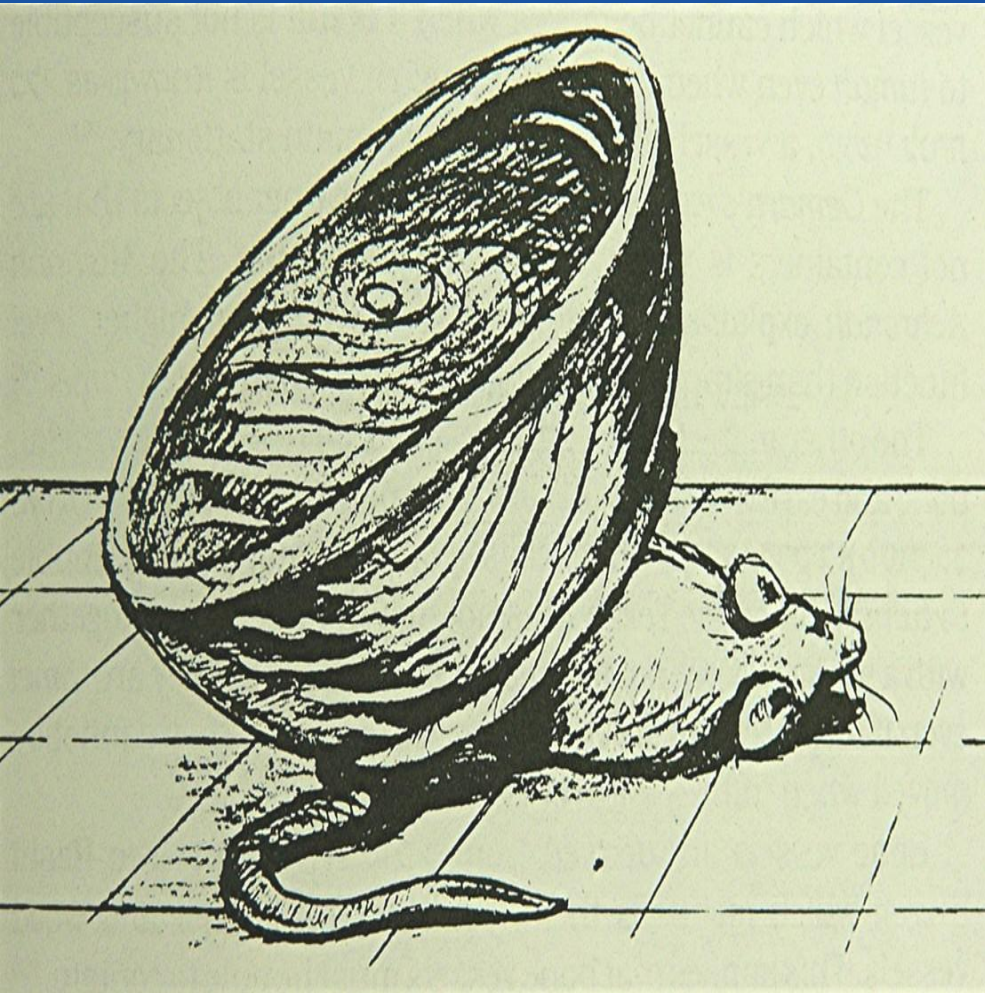
TYPICAL NO SPECIAL VALUE



OPPOSITES



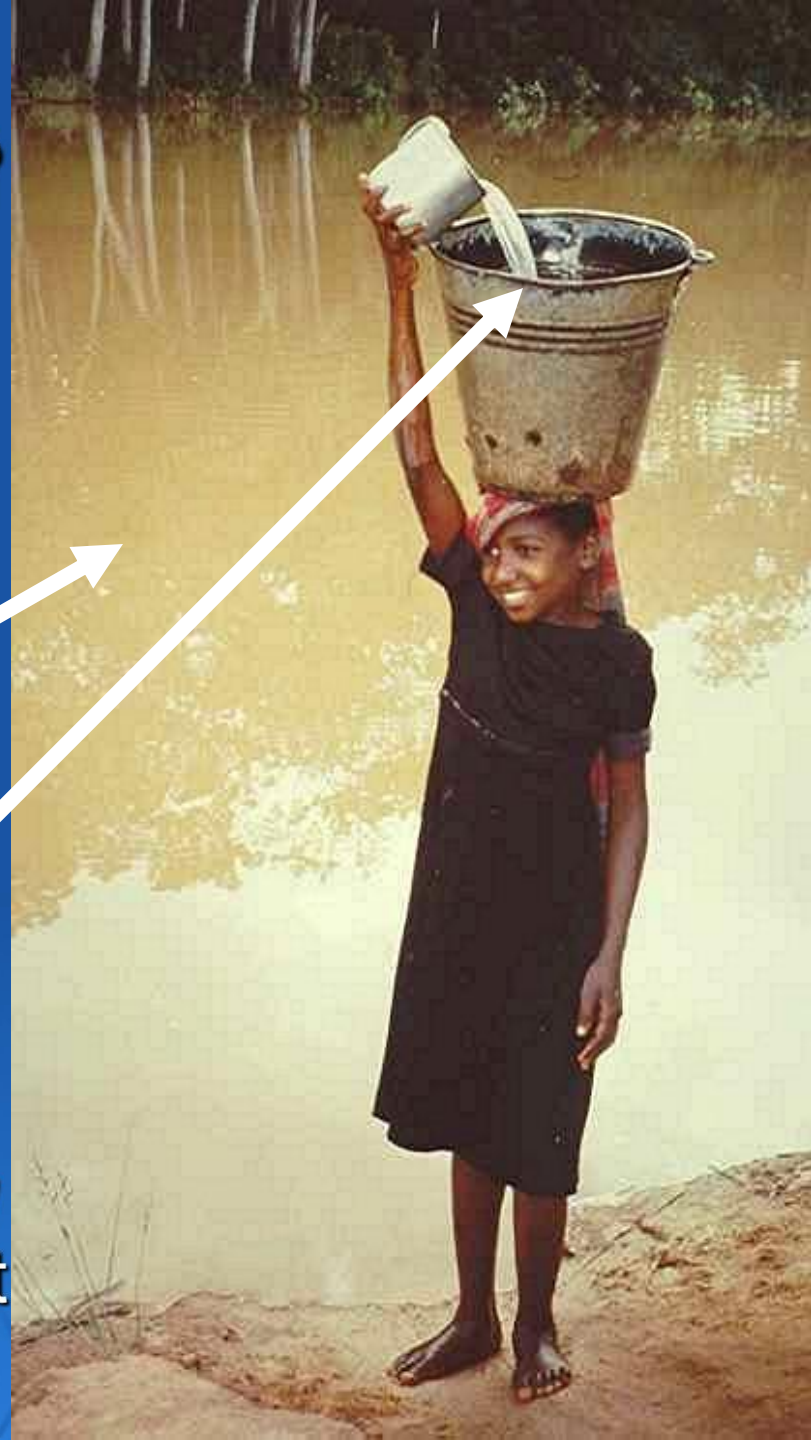
INANIMATE OBJECTS CAN BECOME UNCLEAN



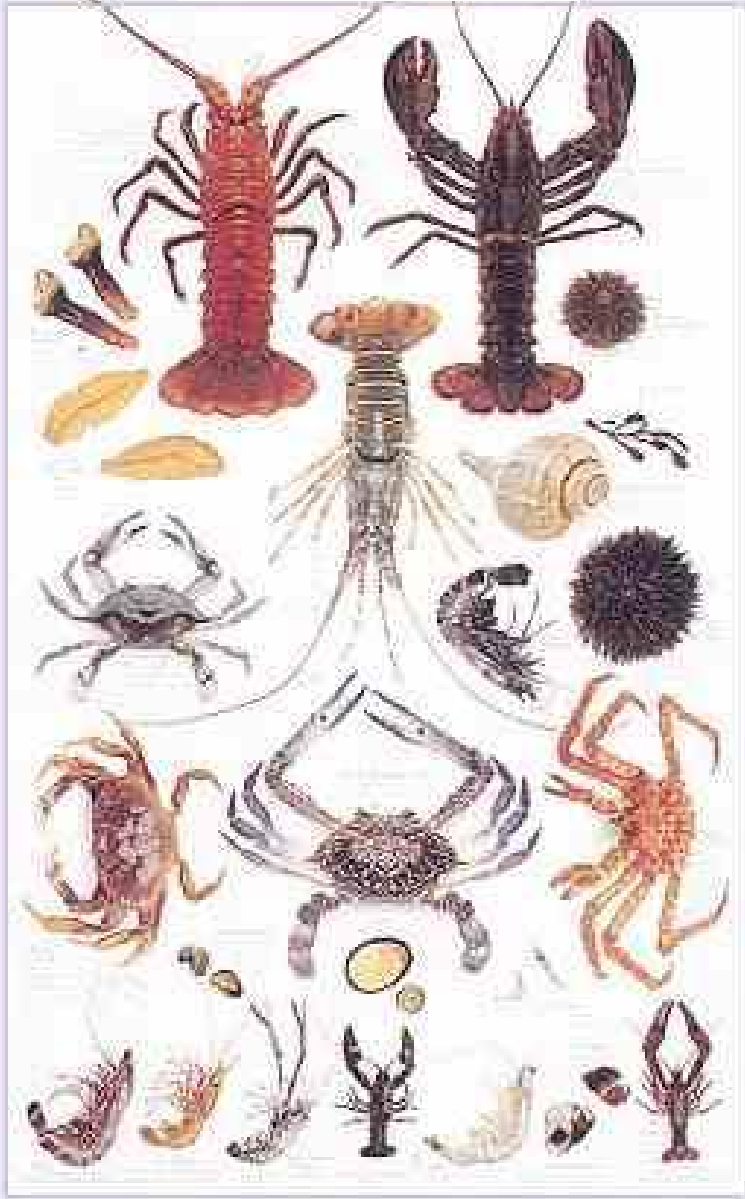
- Container = *keli*
- Wood, goatskin, cloth must be washed in water to remove uncleanness
- Earthen-ware (pottery) must be broken and never used again
- Liquid in container had to be destroyed
- Dead creature touches OUTSIDE of container, can be washed
- Dead creature touches INSIDE of container, usually must be destroyed

WATER: CLEAN OR UNCLEAN?

- The presence of water in a vessel determines whether or not the contents becomes unclean
- Water attached to the earth cannot contract uncleanness
- Water put into a container CAN contract uncleanness
- Immersing an unclean object in water *attached to the earth* CLEANSSES the unclean object



UNCLEAN



SWARMING

- A normally CLEAN animal that dies from disease or accident becomes UNCLEAN
- Swarming creatures are UNCLEAN
- Swarming = *sharats*
- Means it moves at random, darts about, crawls
- Detestable = *shekets*
- Worst class of unclean
- An abomination

S H E L L F E T S H

THINGS MUST BE HOLY TO BE IN YEHOVEH'S PRESENCE

- No evidence, Scriptural or scientific, that animals are aware of God...ONLY MAN!
- Vs. 47 typically reads: “...for distinguishing between....living things which may be eaten....”
- More literally says: “.....that there may be separation between the clean and unclean”
- Yahweh divides, elects, and separates



GOOD
CLEAN
HOLY
GOD'S PEOPLE
TAMEI

EVIL
UNCLEAN
UNHOLY
ALL OTHERS
TAHOR

BOUNDARIES

➤ God has created distinctions

Divide

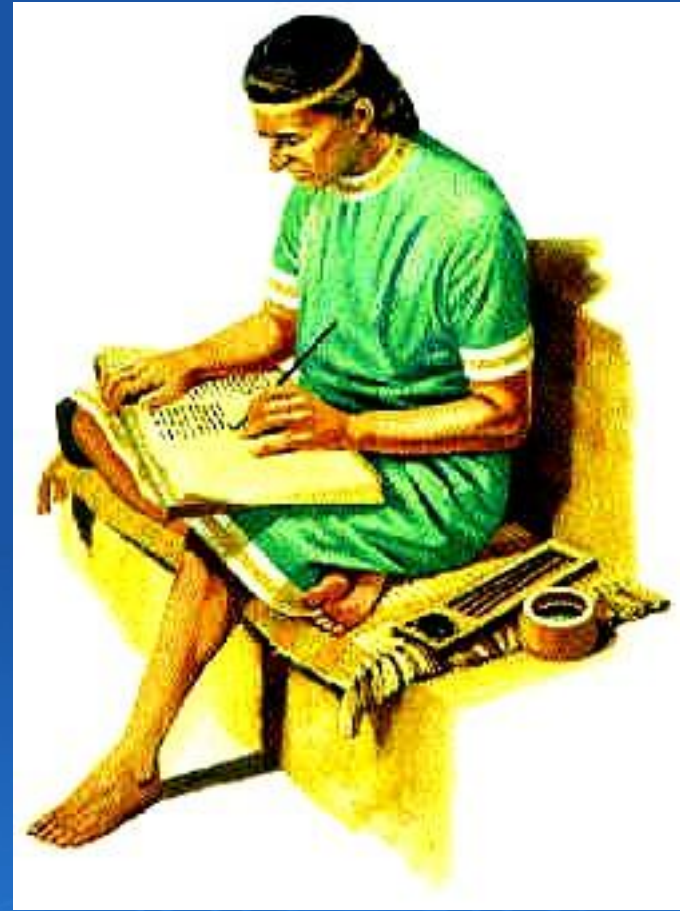
Elect

Separate

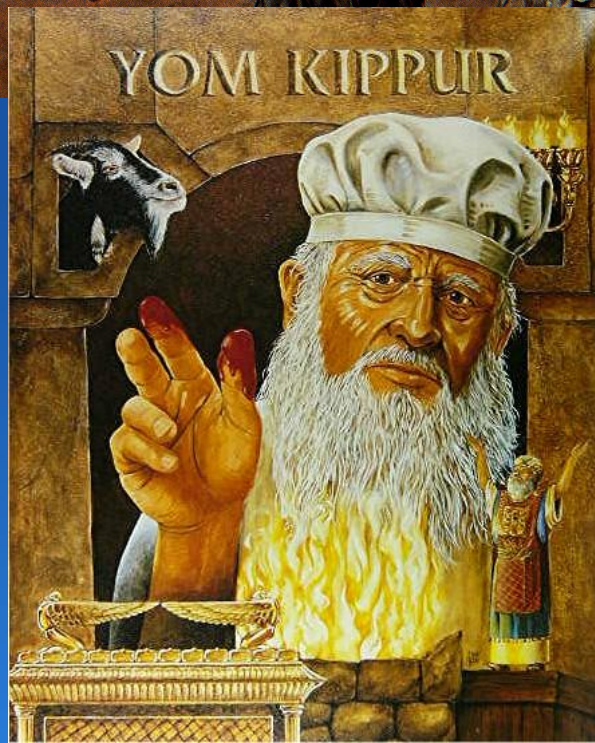
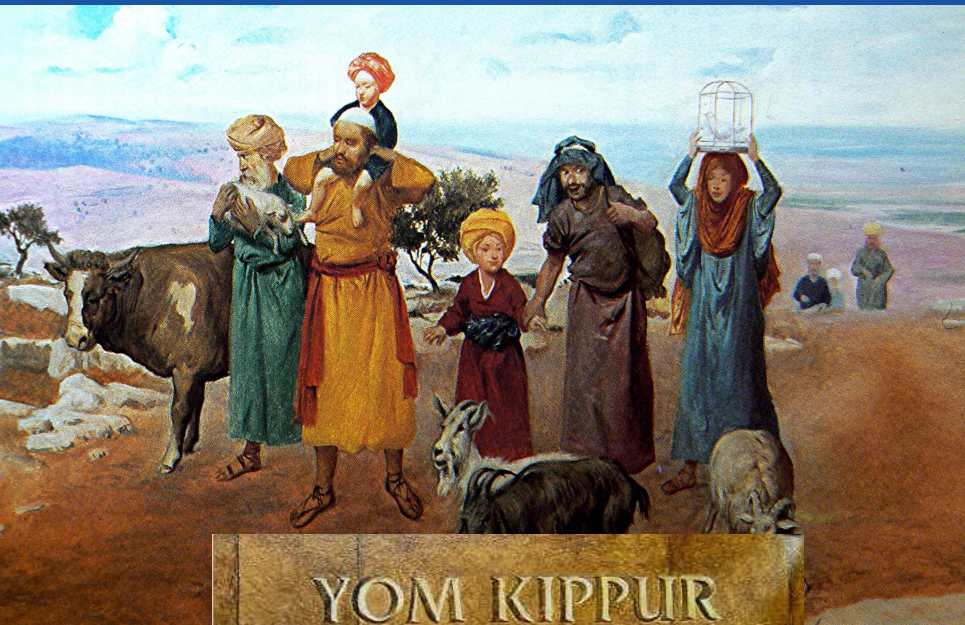


LEVITICUS 11: PUTTING THE PUZZLE TOGETHER

- The key to understanding the Bible is in recognizing the **RELATIONSHIPS**
- Current scholarly belief is that the Old Testament was written in **HEBREW**..... the New Testament was written in **GREEK**
- **IMPORTANT!** Bible was written by Hebrews



THE BIBLE: A HEBREW DOCUMENT



- Culture matters!
- Language reflects its culture
- Culture is embedded in its language
- Tower of Babel didn't just create new languages; it created new people groups which developed separate cultures
- Every culture develops its own unique philosophies and concepts

LANGUAGE AND CULTURE ARE LINKED

- Language and culture have unique concepts that are difficult to communicate to people **OUTSIDE OF THAT CULTURE**
- A) No **WORDS** invented in other cultures for those concepts
- B) **BECAUSE**, those concepts don't exist in other cultures



WHAT WORDS MEAN IS OFTEN DIFFERENT THAN WHAT THEY SAY



- Hebrews had a unique WAY of thinking
- This way was part of their language
- Today, the STYLE (way) of thinking in the world is Greek
- Bible translators, and all of us, think in a style called **RATIONAL / LOGICAL**
- Hebrews thought in a style called **ANALOGIC**

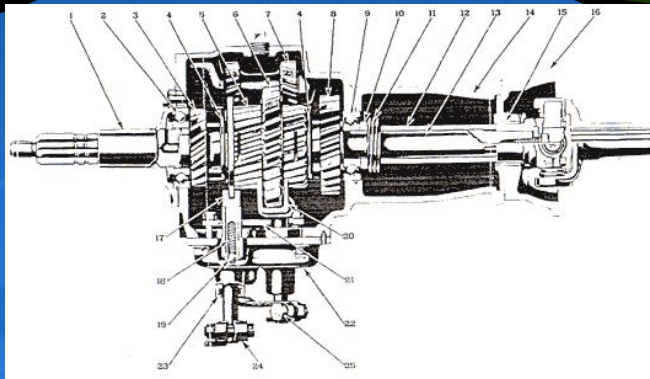
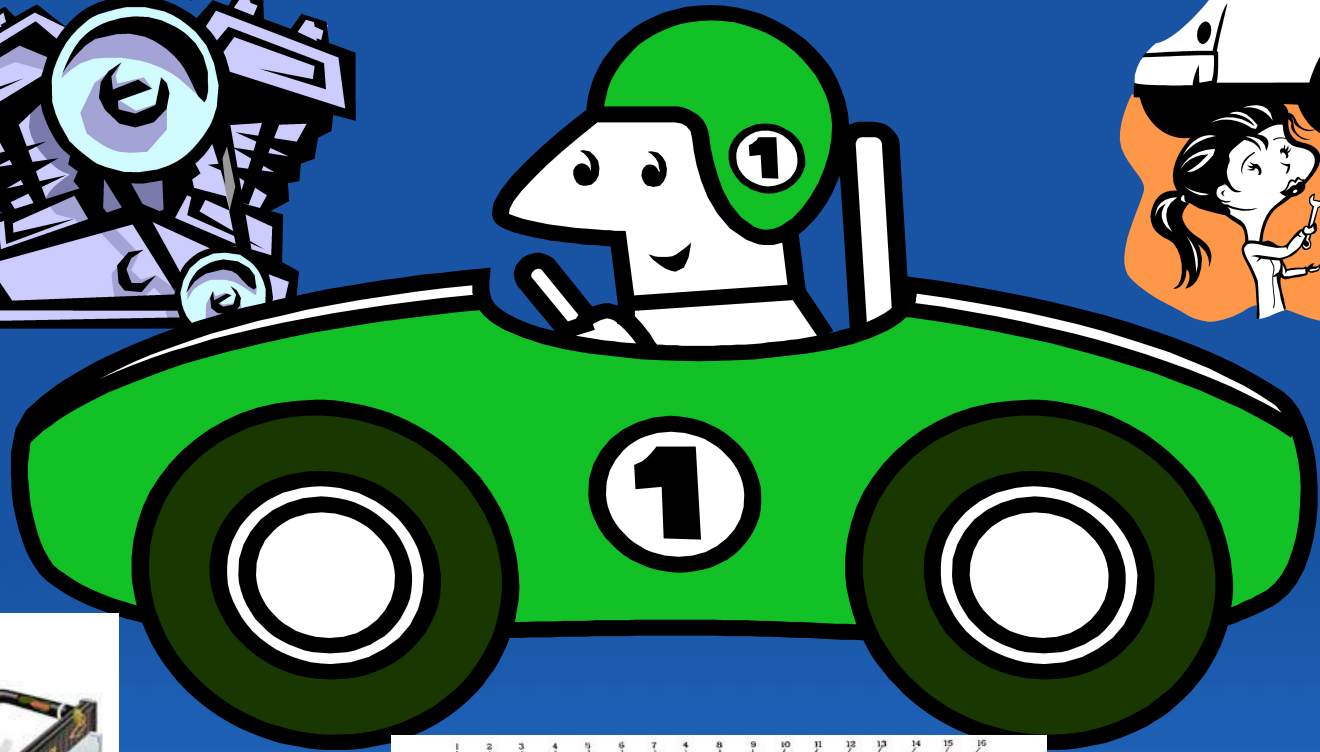
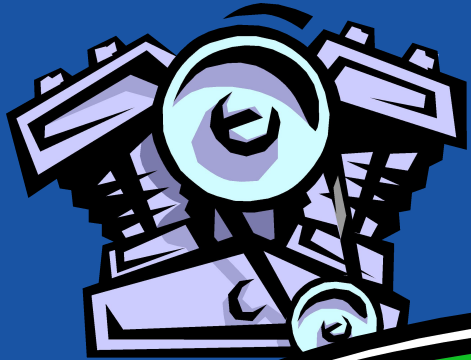
RATIONAL/LOGICAL

- Imbedded in Science
- Cause and Effect
- Systemized
- Main system can be broken down into sub-systems
- Western Medicine
- Deductive Reasoning
- Inductive Reasoning

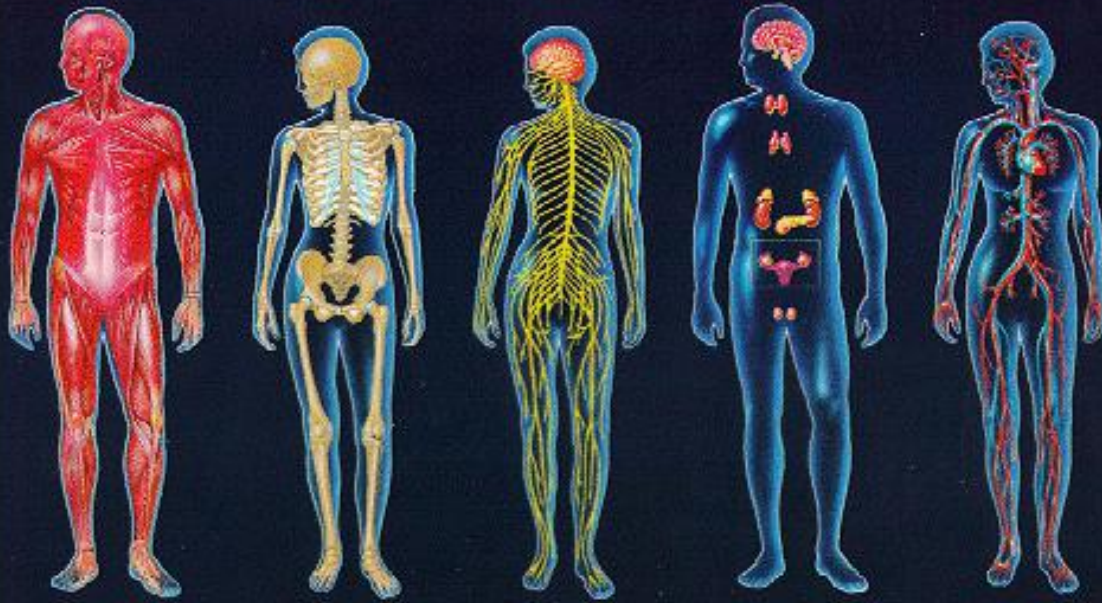
ANALOGICAL

- Operates based on patterns and models
- Searches for common truths shared by similar things
- Relies on relationships
- Sees things as microcosms

SYSTEM AND SUB-SYSTEMS



WESTERN MEDICINE



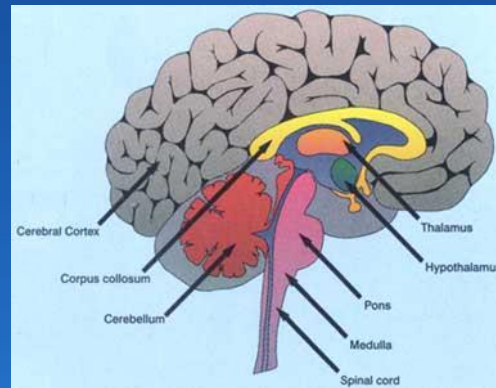
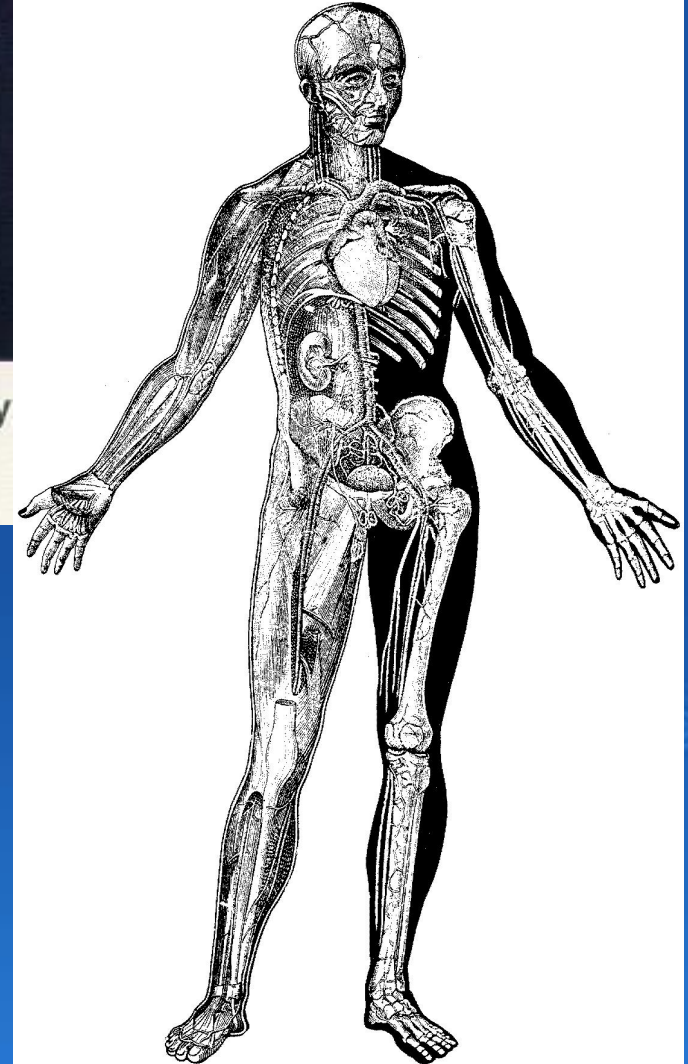
Muscular
System

Skeletal
System

Nervous
System

Endocrine
System

Circulatory
System



2 TYPES OF REASONING

➤ DEDUCTIVE

- Fact #1: All dogs have 4 legs.
- Fact #2: Rover is a dog.
- Conclusion: Rover has 4 legs

➤ INDUCTIVE

- Observation #1: John came to class late this morning
- Observation #2: John's hair was messy
- Experience: John's hair is usually neat and combed
- Conclusion: John **MUST** have overslept

RATIONAL/LOGICAL

ANALOGICAL

➤ GREEK THINKING

Imbedded in Science

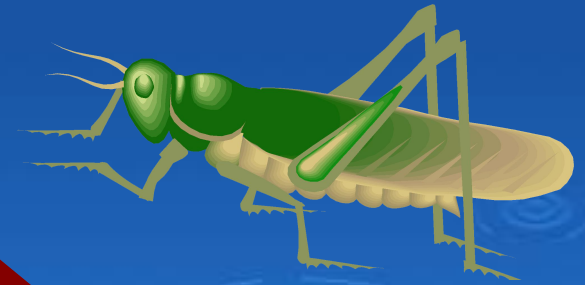
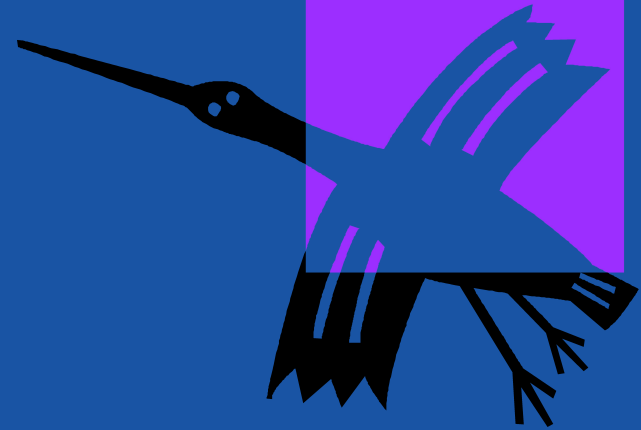
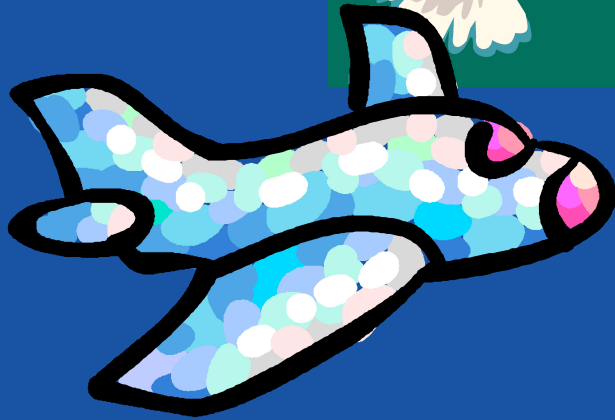
- Cause and Effect
- Systemized
- Main system can be broken down into sub-systems
- Western Medicine
- Reasoning
- Evolutionary, linear
- History is a straight line
- Man centered

➤ HEBREW THINKING

Operates based on patterns and models

- Searches for common truths shared by similar things
- Relies on relationships
- Sees things as microcosms
- Cosmic or spiritual centered

WINGS AND ANALOGIC THINKING



RELATIONSHIPS

- The Torah does NOT attempt to give reasons for the laws and instructions
- INSTEAD..... It gives us ANOTHER new rule and law
- Question: “Why this new law?”
- Answer: “Because it conforms to the underlying principle behind all the laws”.
- Parables of Yeshua are a kind of analogy

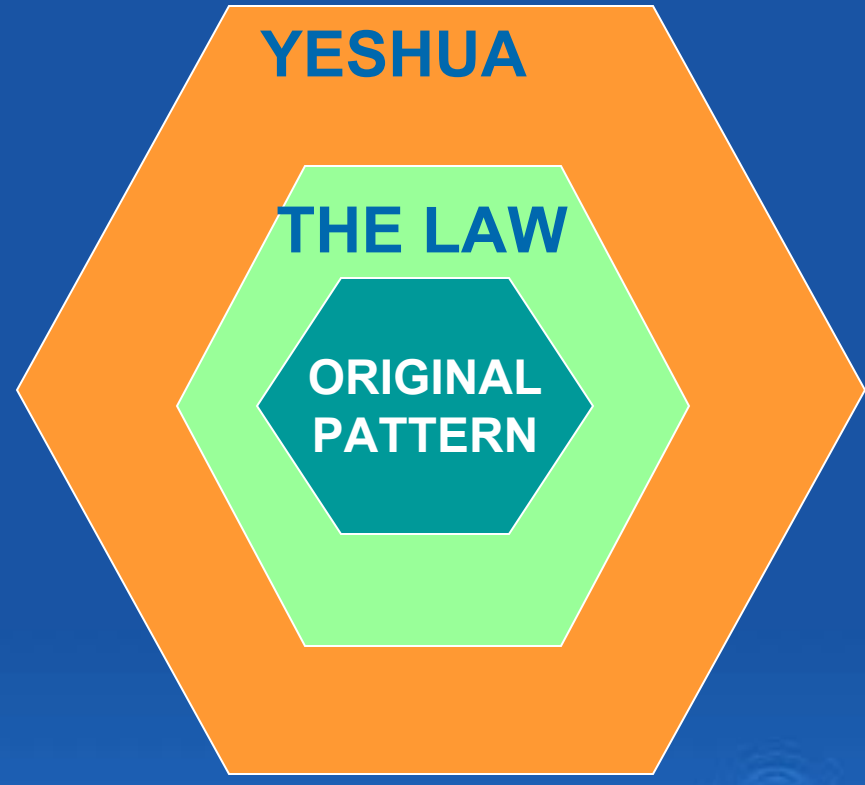
***“ WHICH PATTERN IS TRUE
AND RELEVANT.... ”***



**GENESIS
PATTERN**



**MOSAIC LAW
IS GIVEN**



**YESHUA'S
TEACHINGS**

IS A PARTICULAR LANGUAGE GOOD OR BAD?

- NO! God made all languages
- CHALLENGE: *How do we look at analogic thought (Hebrew) through rational/logical (Greek) eyes?*
- **MUST** have willingness to let go of false doctrines and traditions
- **KEY: WE NEED TO GIVE UP LOOKING FOR “WHY?” AND INSTEAD LOOK FOR “WHICH?” GOD-ORDAINED PATTERNS**